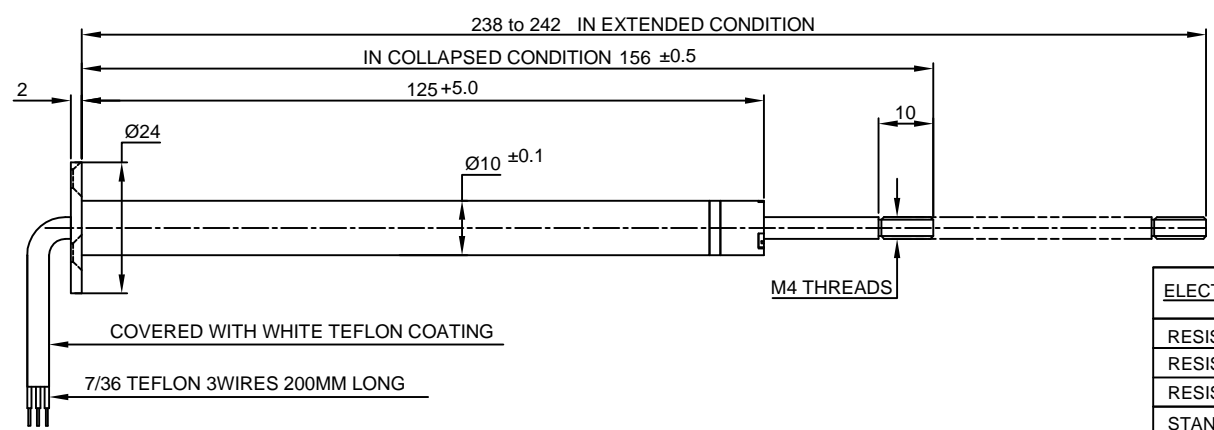
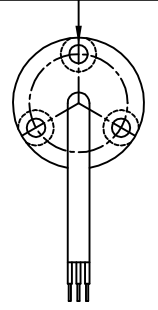


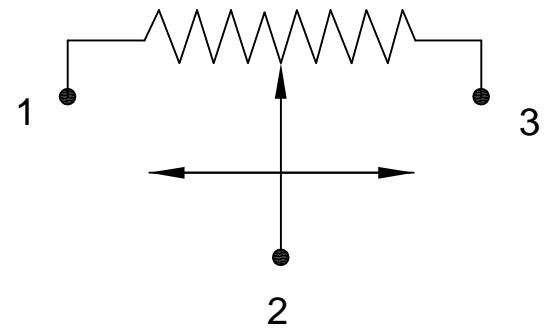
ALL DIMENSION IN METRIC



M3 CSK (Af3 IS:3406)
ON PCD 18



**MOUNTING FLANGE
DETAILS**



ELECTRICAL SCHEMATIC DIAGRAM

ELECTRICAL CHARACTERISTICS	UNITS	VALUE
RESISTANCE ELEMENT...	--	CONDUCTIVE PLASTIC
RESISTANCE VALUE...	Ohms	10K
RESISTANCE TOLERANCE...	±%	10
STANDARD INDEPENDENT LINEARITY TOLERANCE...	±%	2
EFFECTIVE ELECTRICAL STROKE...	STROKE	80 +2°
RESOLUTION...	--	ESSENTIALLY INFINITE
TEMPERATURE COEFFICIENT OF RESISTANCE(TCR)...	ppm/deg C	±400
INSULATION RESISTANCE @ 250 VDC...	M Ohms	100
DIELECTRIC STRENGTH @ 1 MINUTE ...	V Ac	500
ELECTRICAL LIFE (STROKE)...	STROKES	10,000
END VOLTAGE AS A % OF APPLIED VOLTAGE...	%	LESS THAN 0.5

MECHANICAL CHARACTERISTICS :-		
MECHANICAL STROKE ...	STROKE	82 +2.0
BEARING TYPE...	--	SLEEVE
SHAFT PULL OUT FORCE...	Nmm	<7

ENVIRONMENTAL CHARACTERISTICS :-		
OPERATING TEMPERATURE...	DEGREES C	-40 to +105
ROHS COMPLIANCE...	--	YES

VIBRATION:-		
Vibration	Hz	5...2000
Amax	mm	0.75
amax	g	20

SHOCK:-		
	g	50
	ms	11

MATERIALS OF CONSTRUCTION:-		
HOUSING...	--	ALUMINUM BLACK ANODIZED
SHAFT...	--	STAINLESS STEEL
WIPER...		PRECIOUS METAL
MOUNTING ...		FLANGE ON BODY AND THREAD ON SHAFT END

NOTE :- CONTINUOUS IMPROVEMENTS ARE BEING MADE FOR ENHANCING PERFORMANCE FOR CUSTOMER BENEFIT IN PRODUCT DESIGN & PROCESS.THE PRODUCT SUPPLIED MAY BE SLIGHTLY DIFFERENT THAN DESCRIBED BY ABOVE SPECIFICATIONS

UNI-AUTOMATION (I) PVT LTD
 TEL/FAX:+91-20-24420890
 www.uniautomation.com

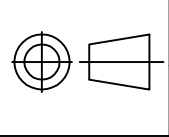
**CONDUCTIVE PLASTIC
LINEAR MOTION POTENTIOMETER**

FIRST ISSUE : 191115 SCALE :1:1

MODEL WT10 (734)

TOLERANCES
DIN-ISO 2768-1 (1991-06)
(TOLERANCE CLASS-MEDIUM)

**UAPL PART NO
149734**



CUSTOMER DRAWING REF NO
NA

CUSTOMER : UAPL STANDARD

REV -00

SHEET 1of1