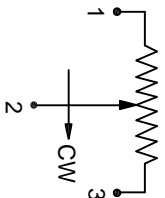
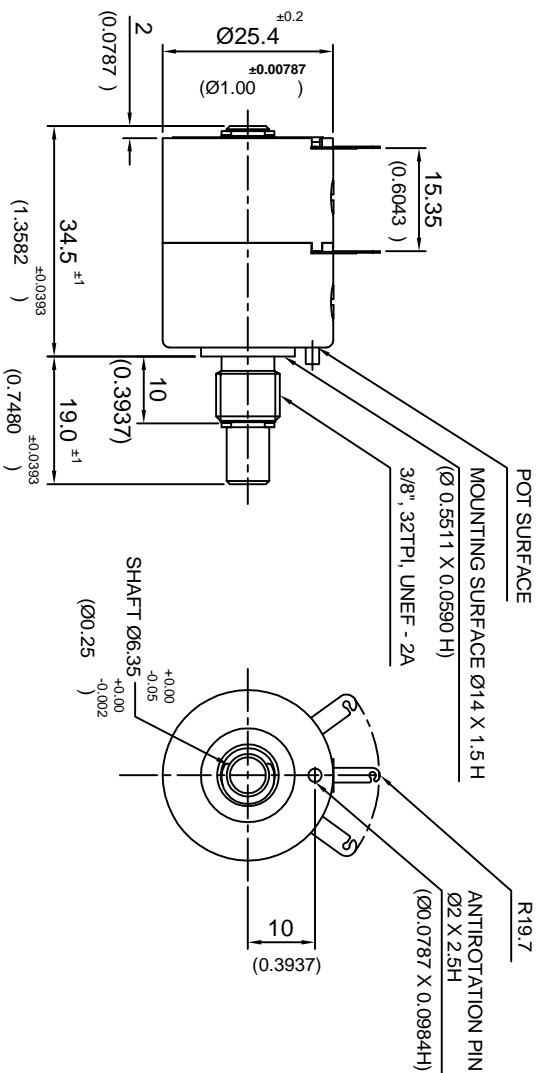
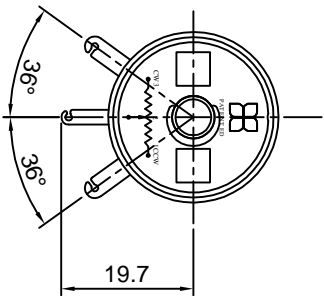


DIMENSIONS :- METRIC (INCH)



ELECTRICAL SCHEMATIC DIAGRAM



REAR SIDE VIEW

UNI-AUTOMATION (I) PVT. LTD.
Tel / Fax: +91-20-24440890
www.uniautomation.com

SINGLE TURN POTENTIOMETER
DUAL GANG WIRE WOUND

P25-753

FIRST ISSUE : 07/06/2015

SCALE: -1:1

UAPL PART NO

129753



CUSTOMER DRAWING REF NO

NA

CUSTOMER : UAPL STANDARD

REV - 00

SHEET :-1 of 1

ELECTRICAL CHARACTERISTICS	UNITS	VALUE
RESISTANCE ELEMENT...	--	WIRE WOUND
RESISTANCE VALUE...	Ohms	1k +1k (FOR RZB9020 169) 2.5k + 2.5k (FOR RZB9020 174)
STANDARD RESISTANCE TOLERANCES...	%	±10
STANDARD INDEPENDENT LINEARITY TOLERANCES:(IEC 393)...	%	± 1
ELECTRICAL ANGLE...	DEGREES	270° ±5°
RESOLUTION...	--	AS PER TURNS
TEMPERATURE COEFFICIENT OF RESISTANCE (TCR)...	ppm/deg C	±50
POWER RATING @ 70° C...	WATTS	1
INSULATION RESISTANCE @ 500 VDC...	M Ohms	1000
DIELECTRIC STRENGTH @ 50 HZ...	V ac	500
MAXIMUM WIPER CURRENT...	mAmps	1
SHORT TIME WIPER CURRENT 10 SEC.	mAmps	10
TRACKING ERROR...	--	3% OF APPLIED VOLTAGE
END RESISTANCE...	%	< 0.1 OR 5 OHMS WHICH IS HIGHER

MECHANICAL CHARACTERISTICS :-

ROTATION (MECHANICAL ANGLE) WITH STOP...	DEGREES	25° ±5°
BEARING TYPE...	--	SLEEVE
TORQUE... STARTING...	Nmm	15
	(Oz.inch)	(2.124)
TORQUE... RUNNING...	Nmm	10
	(Oz.inch)	(1.41)
AXIAL PLAY...	m.m.(inch)	0.2 (0.00787)
RADIAL PLAY...	m.m.(inch)	0.2 (0.00787)

ENVIRONMENTAL CHARACTERISTICS :-

OPERATING TEMPERATURE...	DEGREES C	-40 to +105
--------------------------	-----------	-------------

PERFORMANCE :-

ROTATIONAL LIFE (SHAFT REVOLUTIONS)....	NOS.	100,000
---	------	---------

MATERIALS OF CONSTRUCTION:-

HOUSING...	--	ENGINEERING PLASTICS
SHAFT...	--	STAINLESS STEEL
TERMINALS...	--	SILVER PLATED
MOUNTING HARDWARE ...	--	LOOK WASHER-STEEL + NUT-BRASS, A/F 14 X 3 MM,BOTH NICKEL PLATED
BUSHING...	--	BRASS NICKEL PLATED

SOLDERING RECOMMENDATION :- USE SOLDERING IRON AT 350° C FOR 3 SECOND MAXIMUM.
CLEAN THE SOLDERED PADS WITH ISOPROPYL ALCOHOL. AFTER SOLDERING.
CONTINUOUS IMPROVEMENTS ARE BEING MADE FOR ENHANCING PERFORMANCE FOR CUSTOMER BENEFIT
IN PRODUCT DESIGN & PROCESS THE PRODUCT SUPPLIED MAY BE SLIGHTLY DIFFERENT THAN DESCRIBED
BY ABOVE SPECIFICATIONS

TOLENCES
DIN:ISO 2768 - (1997) (M)
(TOLERANCE CLASS:MEDIUM)