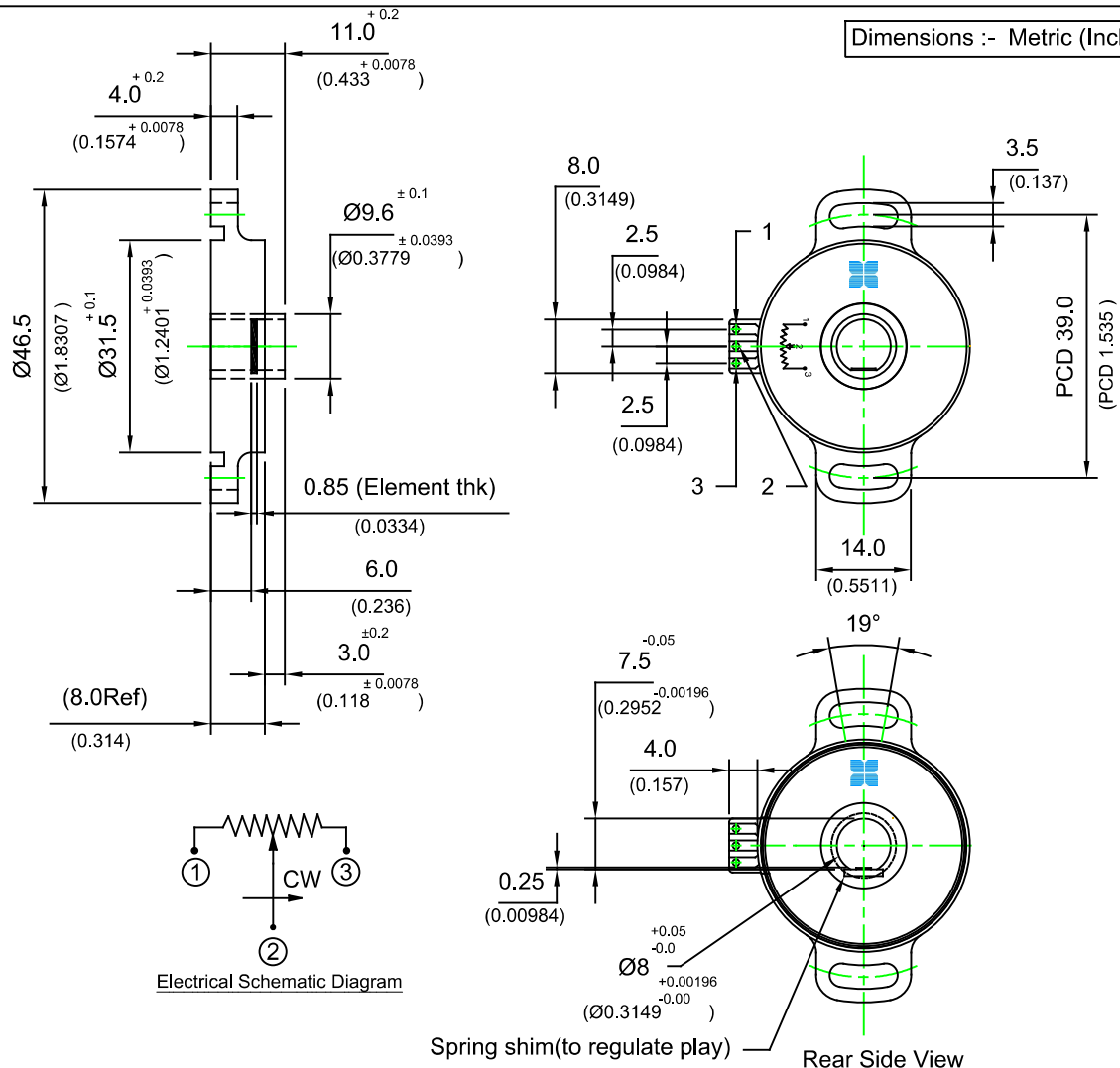


Dimensions :- Metric (Inch)



- Features:-
1. Easy mounting directly on shaft no coupling required
 2. Conductive plastic long life resistance element.
 3. High quality engineering plastic sturdy low profile body.
 4. Precious metal high technology wiper gives noise free output.
 5. Special smaller electrical angles..... available option.
 6. Special design of spring shim eliminates hysteresis.

ELECTRICAL CHARACTERISTICS	UNITS	VALUE
Resistance Element.....	-	Conductive Plastic
Resistance value	Ohms	1K,2K,5K,10K (OTHER VALUE UP TO 100K)
Resistance Tolerance.....	±%	20
Best possible Resistance Tolerance.....	±%	10
standard Independent Linearity Tolerance...(IEC 393)...	±%	2.0
Best possible independent Linearity Tolerance...(IEC 393)...	±%	0.5
Electrical Angle.....(smaller angles optional)	Degrees	340 ± 5
Resolution.....	-	Essentially infinite
Temperature Coefficient of Resistance(TCR)....	ppm/deg C	±400
Power Rating @ 70° C.....	Watts	2.0
Insulation Resistance @ 500 Vdc..	M Ohms	500
Dielectric Strength @ 50 Hz.....	V ac	500
Maximum Wiper current.....	mAmps	1.0
Short time wiper current 10 sec.	mAmps	10
End Voltage as a percentage ofApplied Voltage....	%	< 0.5

MECHANICAL CHARACTERISTICS :-

Rotation (Mechanical Angle).Continues rotation	Degrees	360°
Bearing Type.....	--	Sleeve
Torque... Starting.....	Nmm(Oz in)	10 (1.41)
Torque... Runing.....	Nmm(Oz in)	7(1)
Mounting	--	--

ENVIRONMENTAL CHARACTERISTICS :-

Operating Temperature.....	Degrees C	-40 to +105
----------------------------	-----------	-------------

PERFORMANCE :-

Rotational Life (shaft Revolutions)..	Nos.	5,000,000
---------------------------------------	------	-----------

MATERIALS OF CONSTRUCTION:-

Housing.....	-	Engg. Plastic
Shaft.....	-	Engg. Plastic
Terminals.....	-	Pads on PCB, Gold Plated PTH
Mounting Hardware.....	-	Not provided The Spring shim provided to eliminate mounting play
Bushing.....	-	Brass on one end

Soldering Recommendation :- Use soldering Iron at 350° C for 3 second maximum. Clean the soldered pads with Isopropyl alcohol to avoid noise in out put. Continuous improvements are being made in product design & process for enhancing performance for customer benefit the product supplied may be slightly different than described by above specifications

Uni-Automation (I) Pvt Ltd
 Tel / Fax:+91- (020) - 24440890
 www.uniautomation.com

**CONDUCTIVE PLASTIC
HOLLOW SHAFT POTENTIOMETER**

NP32HS

First Issue : 2008/12/30 Scale - 1:1

Tolerances
DIN-ISO 2768-1 (1991-06)
(Tolerance class-medium)

UAPL PART NO
129292

CUSTOMER DRAWING REF NO

Rev - 00

CUSTOMER : UAPL STANDARD SHEET 1of1

